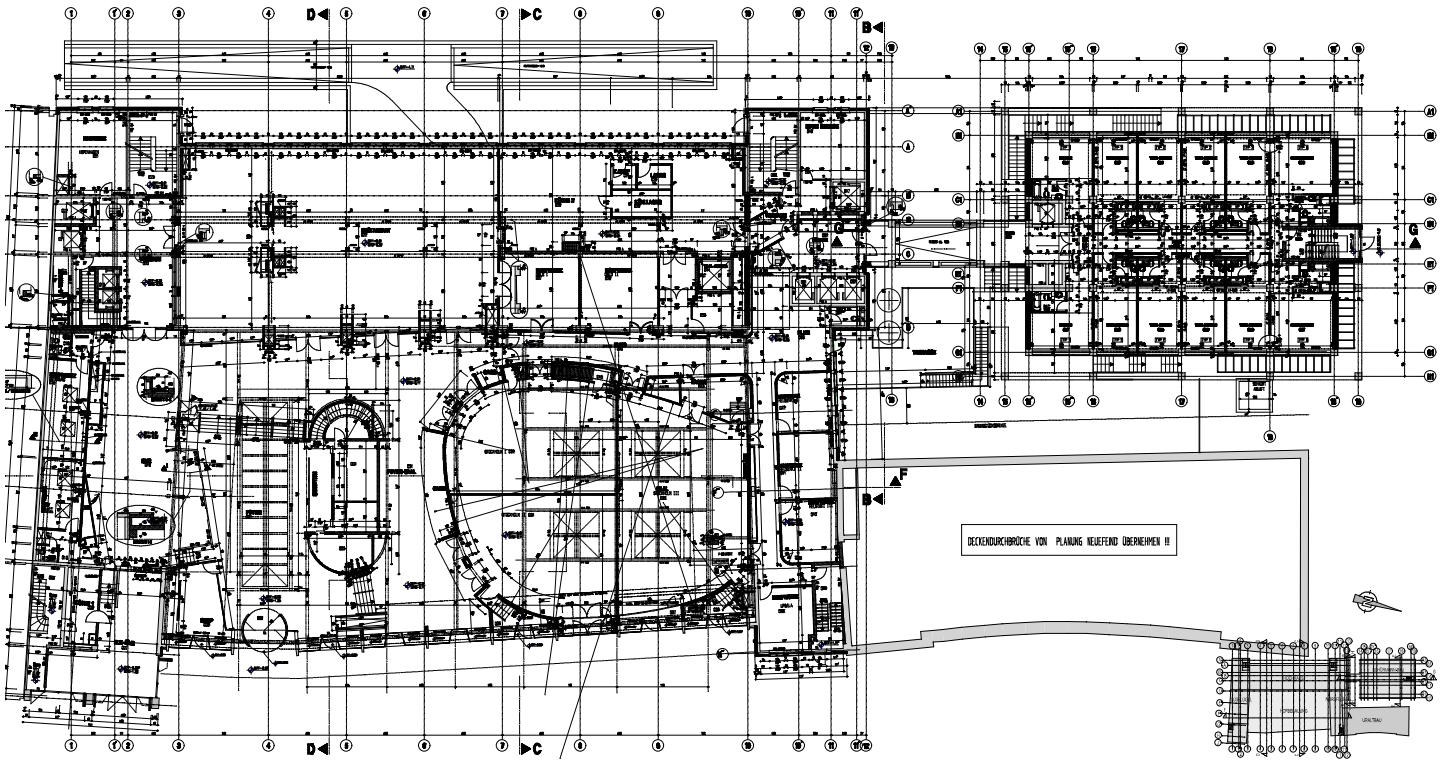




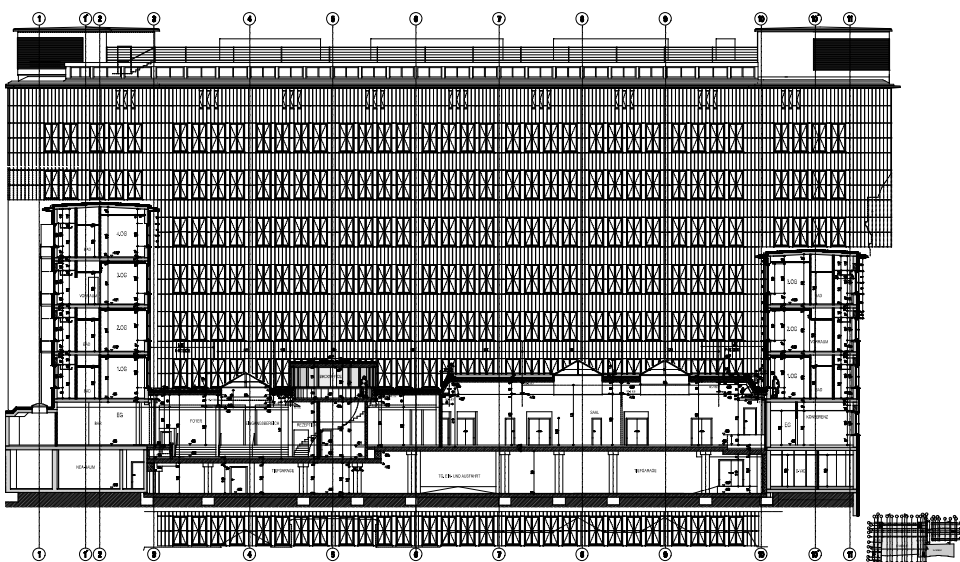
**UMBAU POSTCHECKAMT KÖLN
HILTON HOTEL MARZELLENSTR.
296 ZIMMER, KONFERENZZENTRUM,
TIEFGARAGE**

**PLANUNG : 1/2000
AUSFÜHRUNG : 1/2001 - 2/2002**

HOTEL HILTON

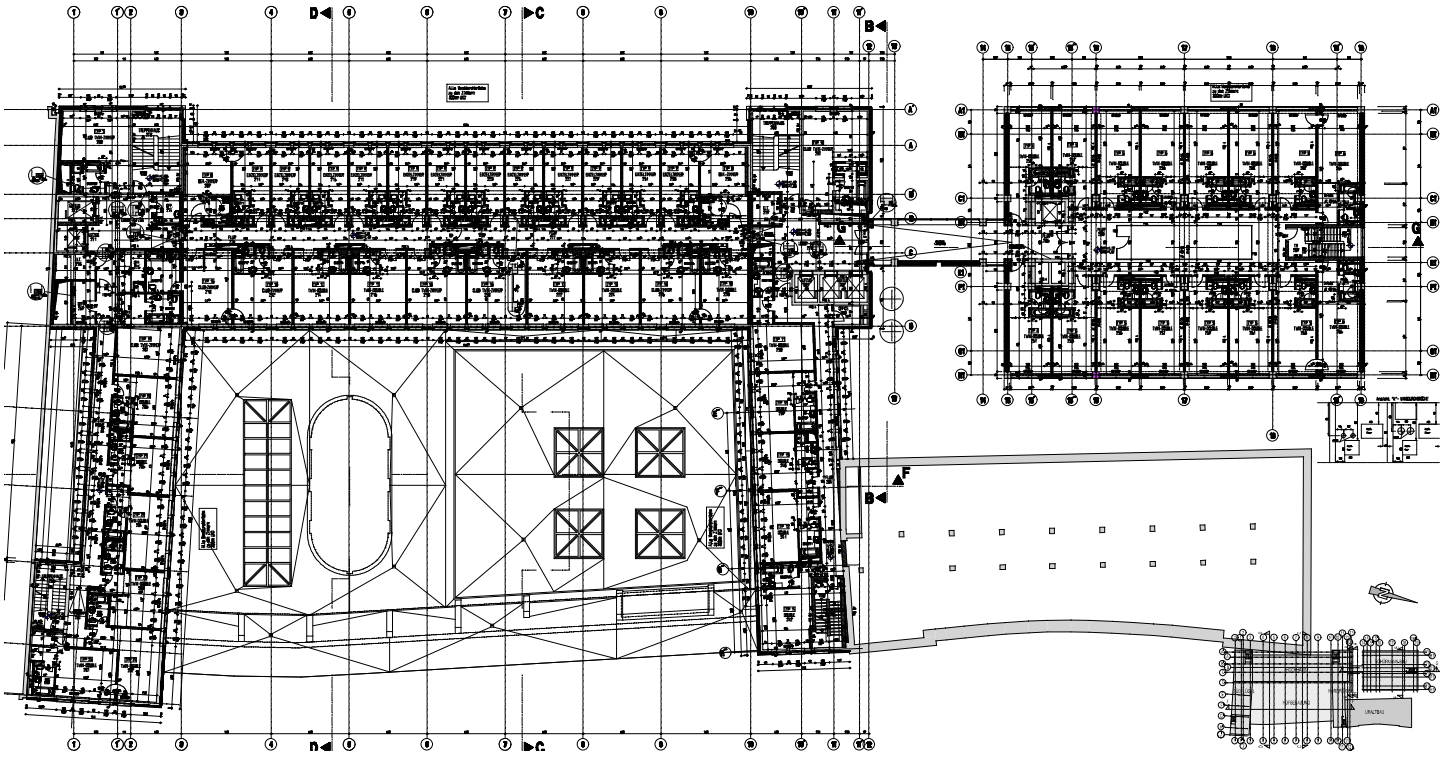


ERDGESCHOSS

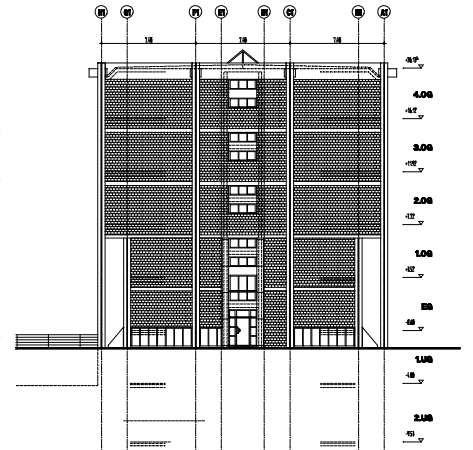
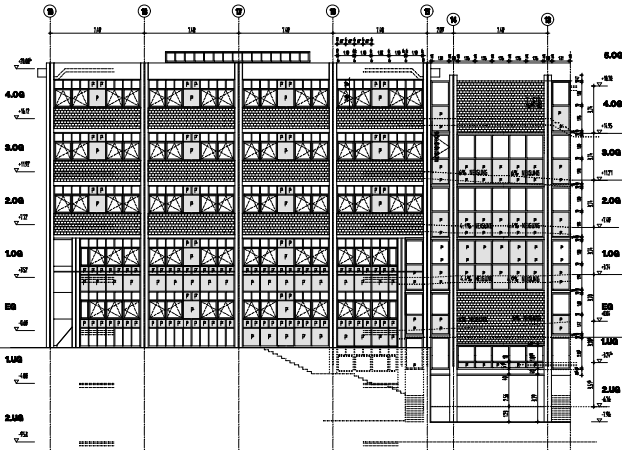


HAUPTANSICHT / SCHNITT F-F

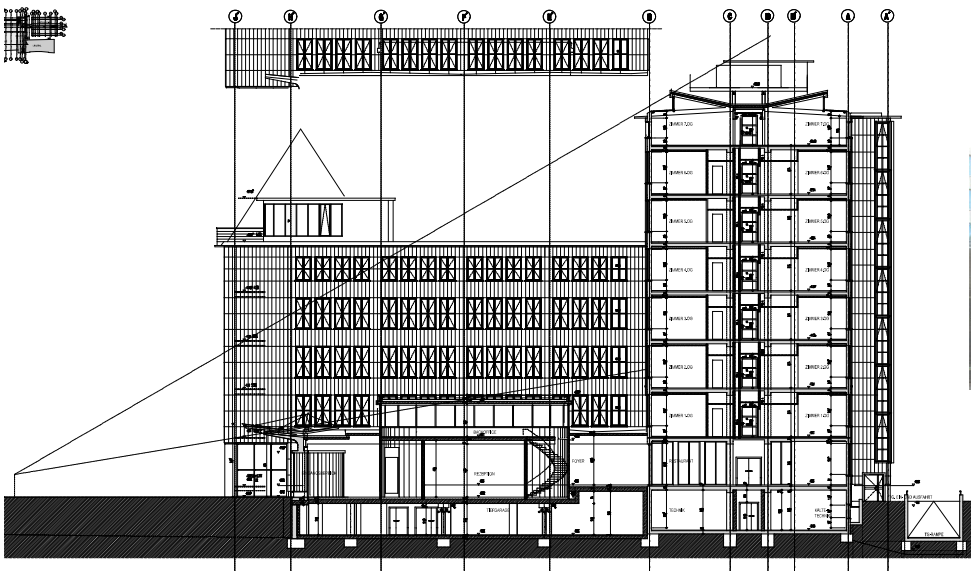




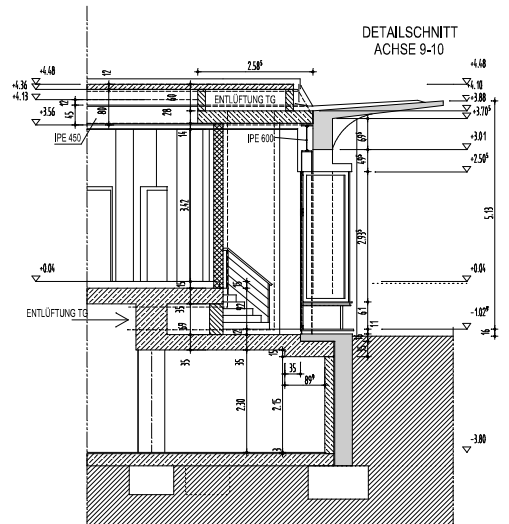
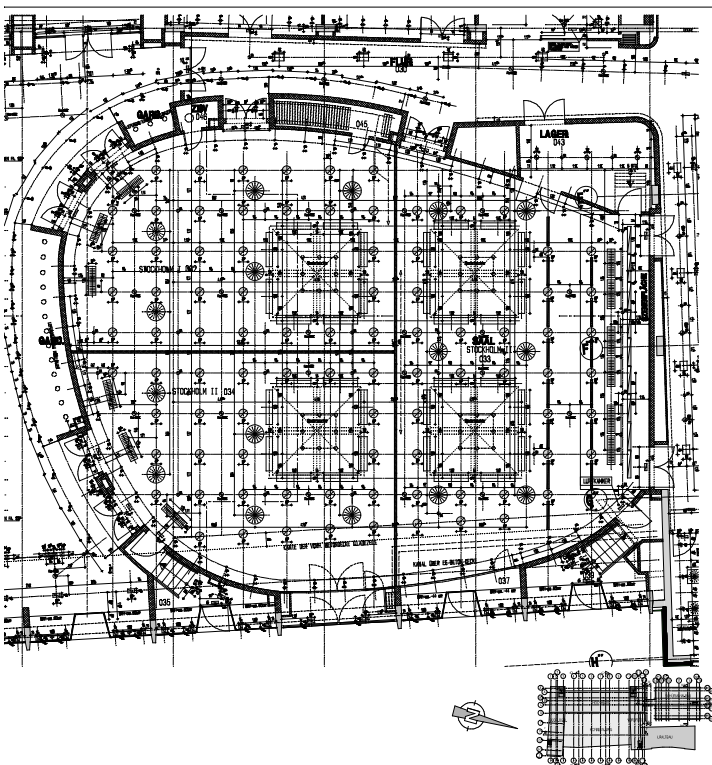
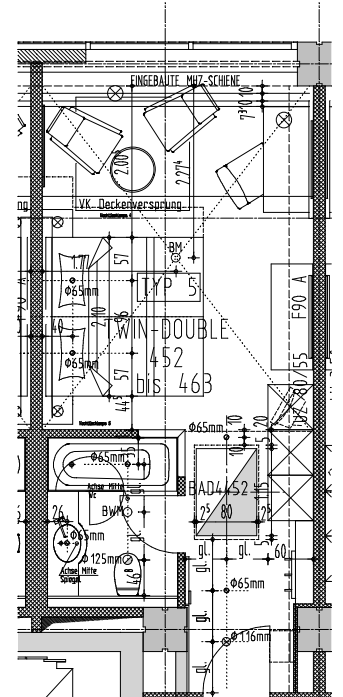
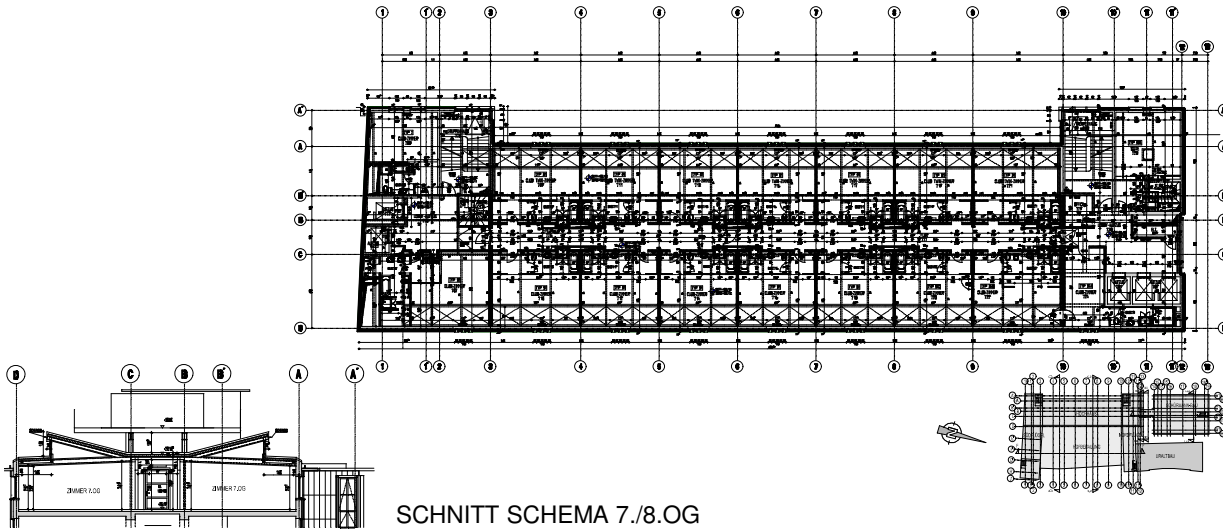
REGELGESCHOSS



WESTANSICHT / SÜDANSICHT SCHÜRMANNBau



NORDANSICHT / SCHNITT D-D



KONFERENZSAAL

DETAILSCHNITT LADENZEILE