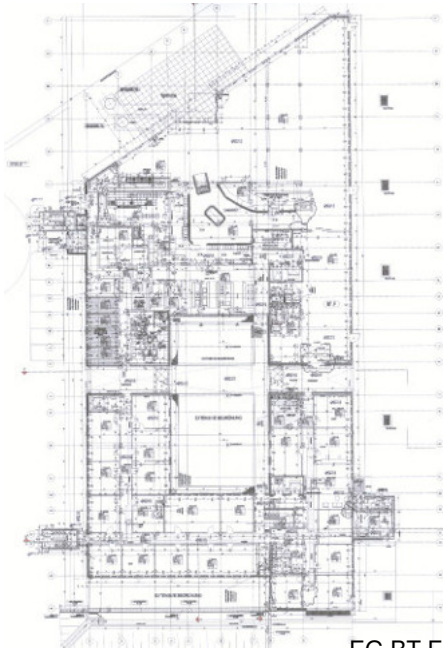
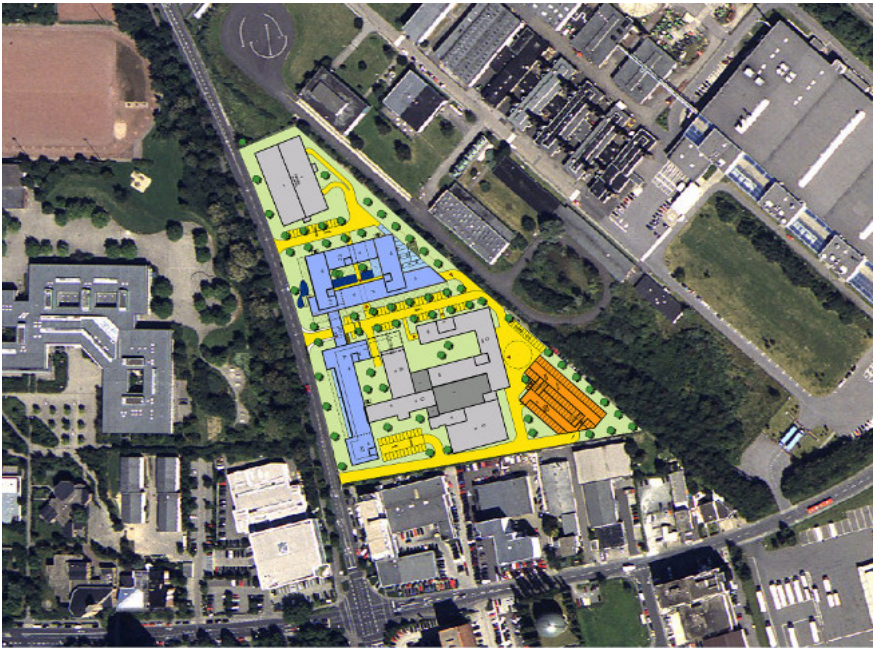
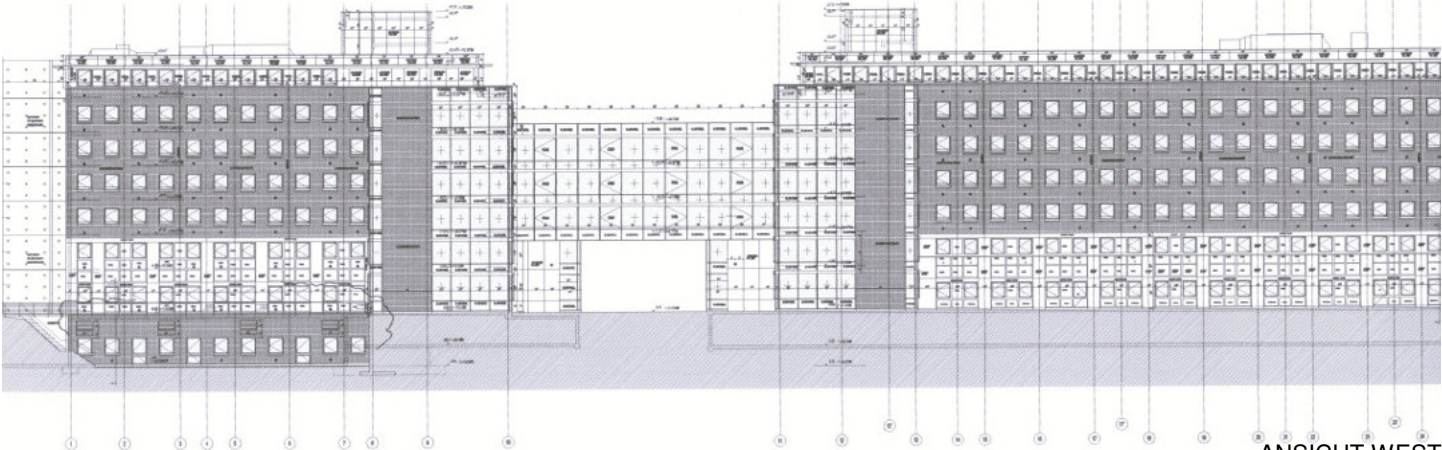


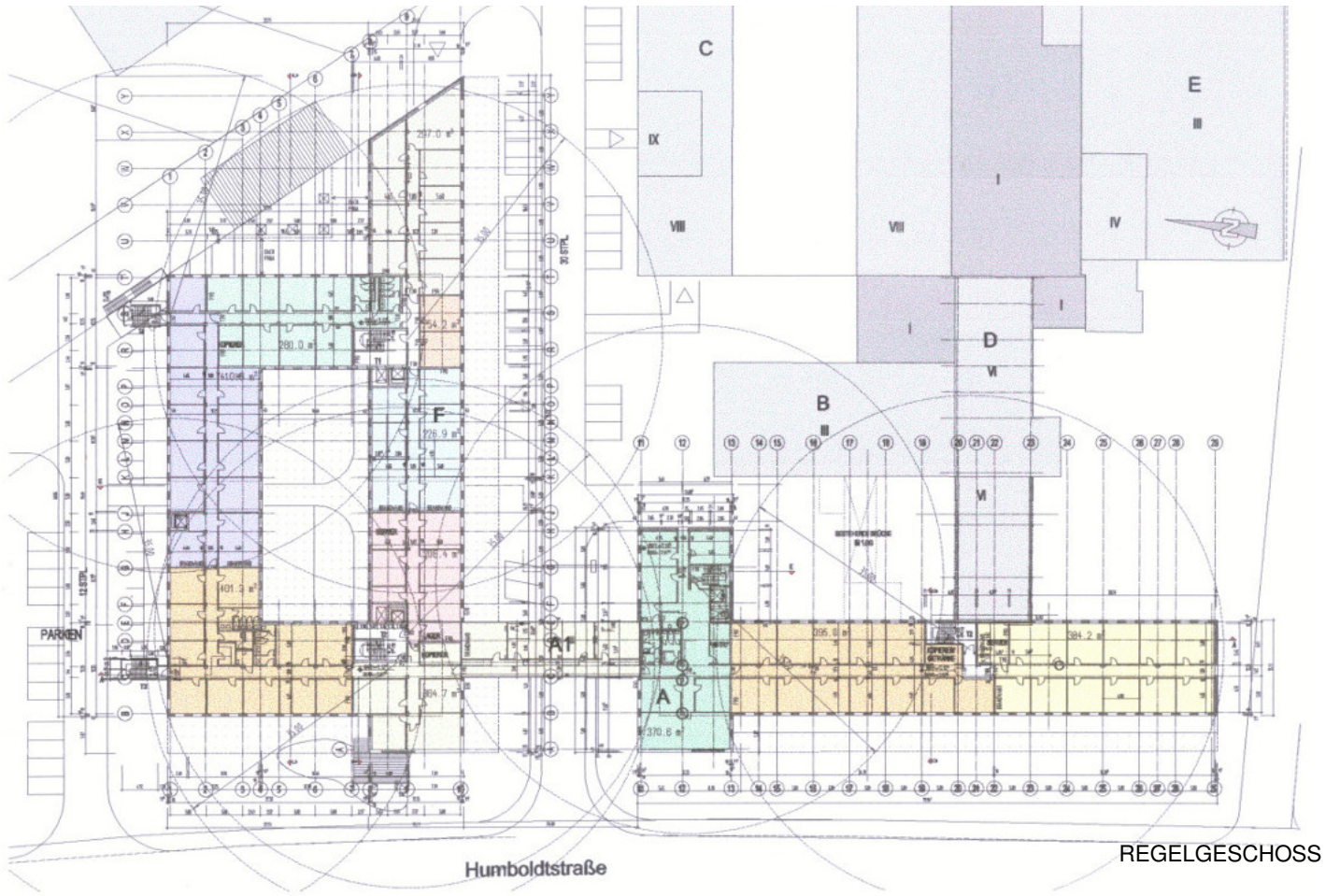
**NEUBAU EINES VERWALTUNGSGBÄUDES
FÜR LTU, DER UND HAUPTVERW. TOOM
NUTZFLÄCHE: ca. 32000 qm
TIEFGARAGENSTELLPLÄTZE: 100
PARKHAUSSTELLPLÄTZE: 500
AUSFÜHRUNG: 3/2002 - 11/2003**

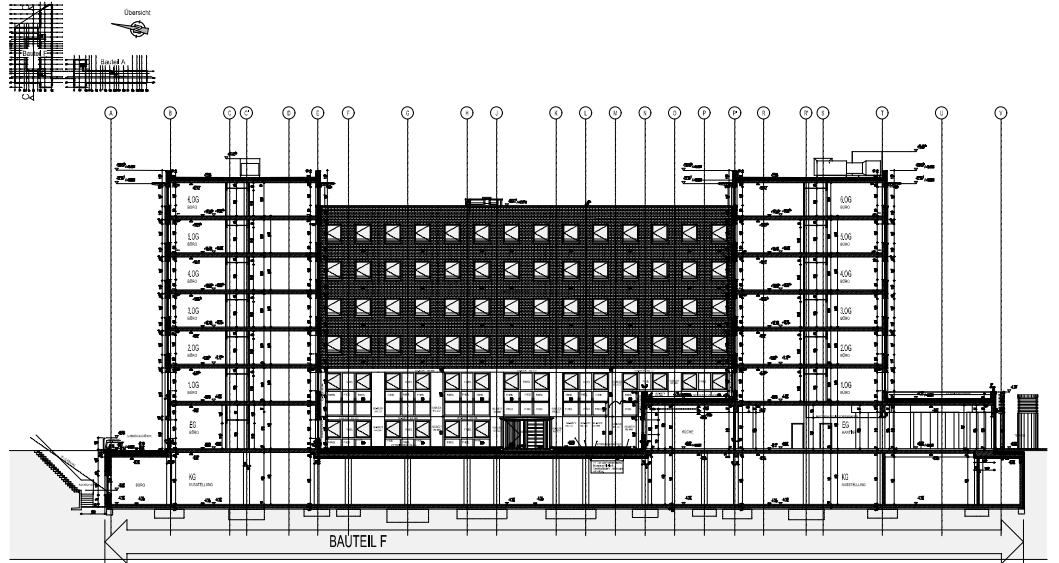


EG BT.F

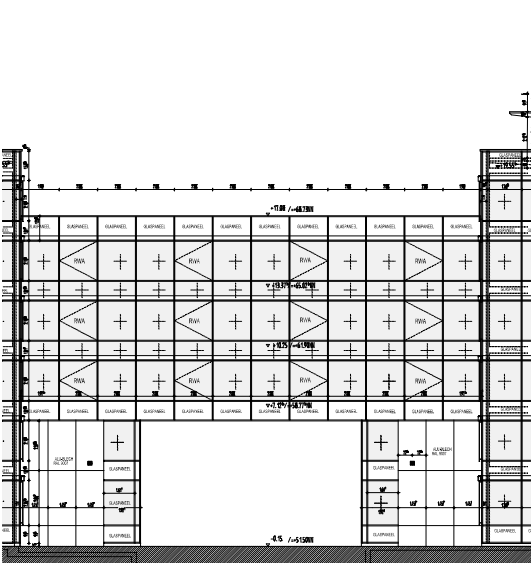
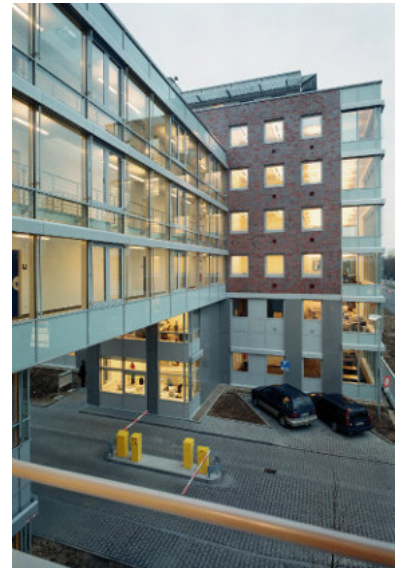


ANSICHT WEST

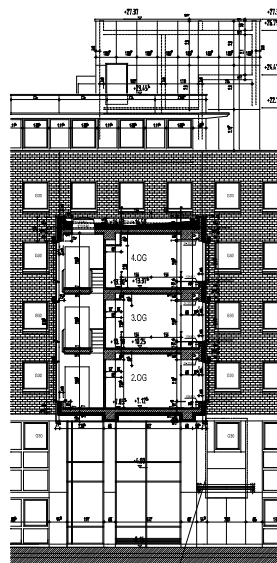




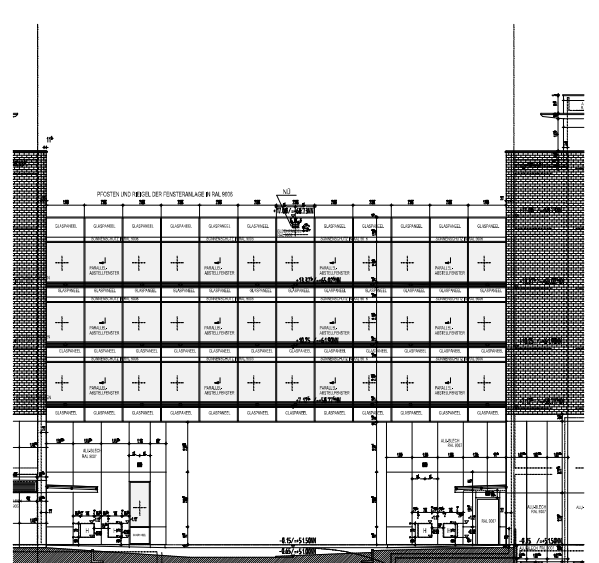
SCHNITT C-C



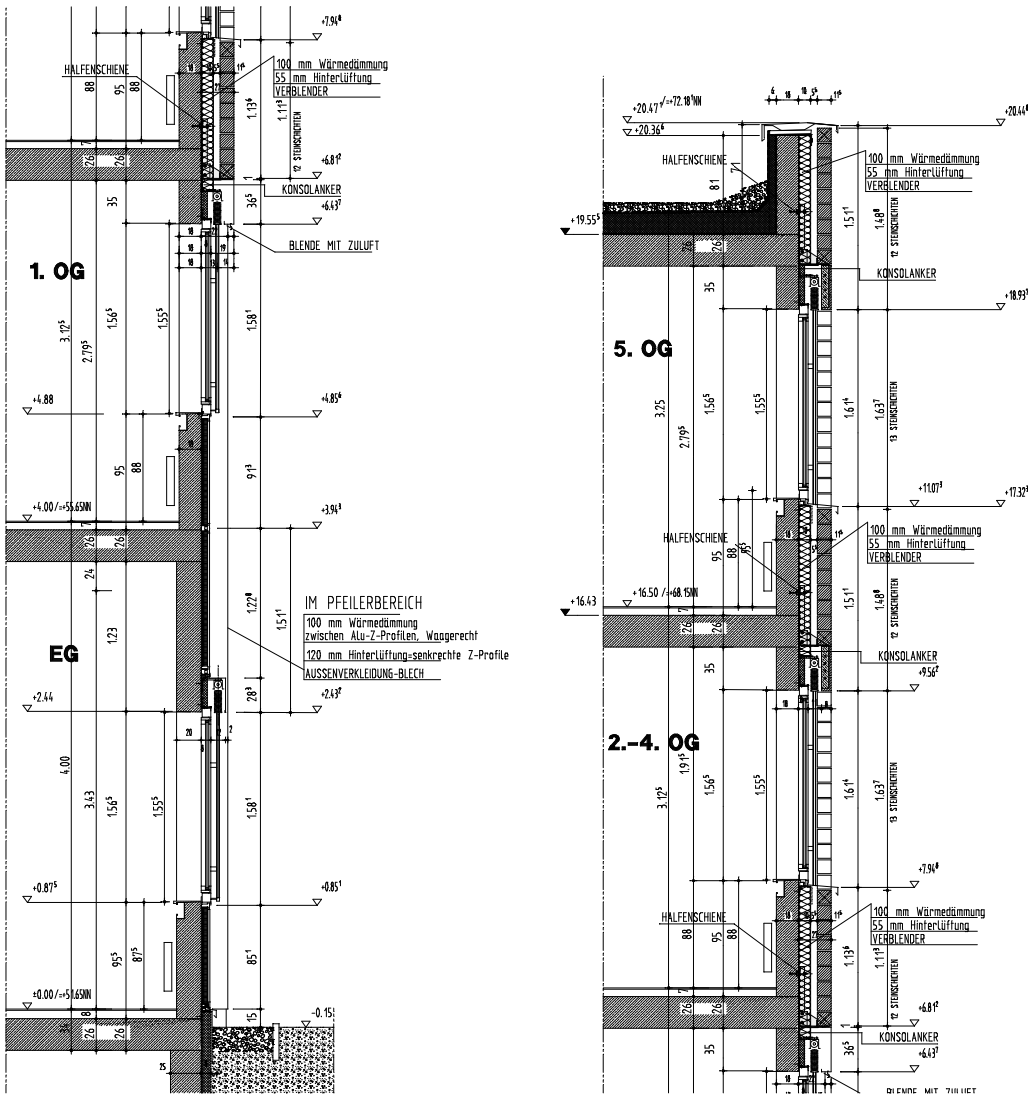
WESTANSICHT BRÜCKE



BRÜCKENSCHNITT



OSTANSICHT BRÜCKE



SSADENSCHNITT



NTINE



KÜCHE